

Earthquake Preparation



Kyoto City Disaster Prevention Portal Site

This website offers various information related to disaster preparedness.
● Information of designated emergency evacuation sites and their operating status.
● Transportation and other information

Multilingual Support



Language Selection

Computer



Smart phone

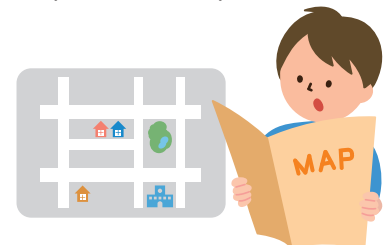


Run-down of Evacuation Procedures

Before an Earthquake Occurs

What You Should Do Beforehand

- Locate your home on the map printed on the other side of this sheet.
- Confirm the evacuation site location and what you should do.
- Prepare necessary items.

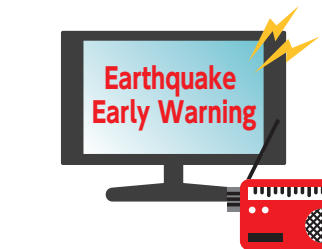


Earthquake

Earthquake Early Warning (Kinkyu Jishin Sokuho) Issuance

Earthquake Early Warning

- Issues prompt alerts, such as the start of a large scale earthquake.
- Warnings are broadcast on TV, radio, etc.



Until Shaking Subsides

At home/In a building

- #### Protect Yourself
- Shelter under a solid table.
 - Be careful to avoid falling furniture and other items.



Outdoors

- Stay away from concrete-block walls, vending machines and buildings.
- On buses or trains, hold on tightly to straps and handrails.
- If driving, turn on your hazard lights to alert other drivers, then gently slow down. Do not slam on the brakes or stop suddenly.



First 5 Minutes

Once Shaking Has Stopped

To Prevent Fires

- Turn off the gas in the kitchen, heating devices, etc.
- If a fire starts
- Extinguish the fire with a fire extinguisher, etc. Loudly inform neighbors of the fire, and dial 119 (emergency number).



Evacuation Preparations

- Make an exit path.

If you are trapped inside

Yell out in a loud voice, bang and make noise by striking nearby objects to let others know of your presence.



- Prepare items to bring in Emergency Situations.
- Turn off your circuit breaker to prevent a fire.
- Leave a written memo in a visible location near the entrance so others know where you have gone.



5 to 10 Minutes

Evacuation

Standard Evacuation Procedure:

Home ▶ Local Temporary Evacuation Point ▶ Designated Emergency Evacuation Site

※ If there is a threat of fire, temporarily evacuate to a Designated Refuge Area.

Local Temporary Evacuation Point

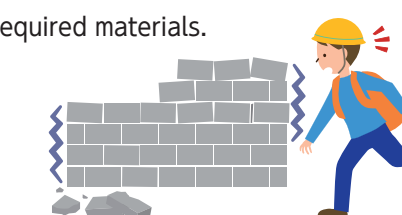
Local Temporary Evacuation Points are nearby locations where people gather after disasters to check on the safety of neighbors, learn the extent of damage, conduct small-scale firefighting duties, and obtain evacuation guidance.

Inquire at your nearest fire station for information about your area's Local Temporary Evacuation Point.



Precautions

- Travel on foot and take the minimum required materials.
- Travel on wider streets/paths, and avoid potential hazards such as concrete-block walls, gate posts, and tall objects/structures which may fall.



Upon Reaching the Local Temporary Evacuation Point

- Check the damage conditions and people's safety.

If somebody needs help

Help extinguish fires and help provide first aid. If dealing with the situation is difficult, call the fire department and/or police.

After 10 Minutes or Later

Arrival at Designated Emergency Evacuation Site

- Write your name and personal information on the evacuees list.
 - Consult with evacuation shelter staff members if you have questions or are in a difficult condition.
- ※ Designated Emergency Evacuation Sites are operated in cooperation with local residents.



Until Outside Help Arrives

- For daily necessities, use your own items brought to emergency situations before using shelter supplies.
- Do not enter any damaged or collapsed houses/buildings.
- Obtain accurate information, and be prepared for aftershocks.



Evacuation Site



Designated Emergency Evacuation Site

A facility where evacuees can stay temporarily until danger passes, or temporarily accommodate them in case they are unable to return home due to disaster damage.



Designated Refuge Area

An evacuation site to escape from fire danger.



Which designated emergency evacuation site should I go to?



As a general rule, use the designated emergency evacuation site in the school district of your residence (see the other side of this sheet).

[Contact point for inquiries regarding designated refuge areas and designated emergency evacuation sites:]

General Affairs Section, Community Power Promotion Office, Fushimi Ward Office

General Affairs Section, Community Power Promotion Office, Fushimi Ward Fukakusa Branch Office

General Affairs Section, Community Power Promotion Office, Fushimi Ward Daigo Branch Office

Evacuation Sites in Kyoto City

Check for the evacuation site in your neighborhood.



<https://www.bousai.city.kyoto.lg.jp/0000000311.html>

075-611-1295
075-642-3125
075-571-6105

Regular Preparation

Items to Bring in Emergency Situations

- ▶ Prepare the minimum items you will need
- ▶ Store those items in a backpack or similar carrying bag that leaves both hands free



Passport, Residence card



Copies of important documents (driver's license, health insurance card, etc.), cash, bankbook, personal seal (inkan/hanko)



Preserved foods and water



Mobile phone, portable radio, flashlight, chargers and batteries



First aid kit, medications



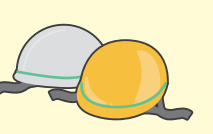
Clothing, towels, wet wipes



Work gloves, glasses, lighters, etc.



Diapers, feeding bottle (if a baby is involved)



Helmet(s)

Items to leave at home:

Keep about 3 days of preserved food and water in stock.

Creating your Personal Timeline (My Timeline)

Enter all required items to create a personal, written timeline with instructions about what to do in the event of a natural disaster



My Timeline (website)

<https://www.bousai.city.kyoto.lg.jp/mytimeline/>



Disaster Information App [Safety Tips]

Download and install this app to receive emergency notifications including earthquakes and other natural disasters.

The app is available in 14 languages.



<https://www.rcsc.co.jp/safety>

Measures to Protect Yourself from Falling Furniture and Other Items

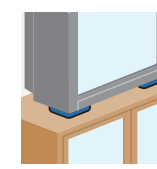
In recent years, 40 to 50% of earthquake-related injuries have been caused by falling furniture and other items.



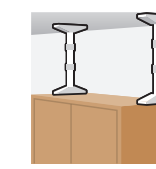
Protect yourself from falling furniture

- ▶ Minimize the amount of furniture in your bedroom.
- ▶ Do not place furniture near the entrances of any room.
- ▶ Do not place items on top of furniture.
- ▶ Place heavy items on lower shelves.

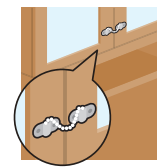
Furniture-falling Prevention Items



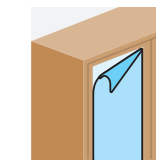
Adhesive mats
Fixing furniture and TVs on the floor with mats having an adhesive surface.



Tension rods
Secures furniture by placing rods between the tops of furniture and the ceiling.



Cabinet door securing tool
Prevent cabinet doors from opening so dishware and other items can't spill out.



Glass scattering prevention film
Prevents glass from scattering by adhering films to windows, glass cabinet doors, and the like.

※ It is important to correctly use furniture falling prevention tools in order to fix furniture and prevent glass breakage. Other furniture fixing items are available at general stores.

Useful Information in Emergency Situations

Emergency Numbers

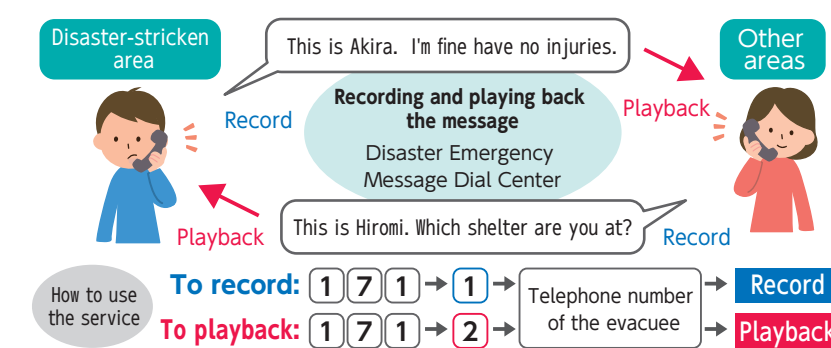
Problems/Accidents (police) **110** (no area code required)

Fire, emergency, ambulance **119** (no area code required)

Disaster Emergency Message Dial (171)

Disaster Emergency Message Dial (171) is activated to connect family members and friends via standard telephone, mobile phones or computer in the event of an earthquake.

- Delivering information about people in disaster-affected areas using audio recordings.
- Becomes available following disasters such as earthquake of lower 6 or greater on the Japanese seismic scale.
- Accessible via standard phones, public phones and mobile phones.



If a phone is not available

Use the Disaster Emergency Message Board (web171) to confirm personal safety.



Consultations Regarding Disaster Prevention and Response

General Affairs Section, Fushimi Ward Office 075-611-1295
General Affairs Section, Fushimi Ward Fukakusa Branch Office 075-642-3125
General Affairs Section, Fushimi Ward Daigo Branch Office 075-571-6105
Disaster Prevention and Crisis Management Office 075-222-3210

Note

Write down the evacuation site you use in case of earthquake.

- The school district of my residency

- Local Temporary Evacuation Point

- Designated Emergency Evacuation Site

- Designated Refuge Area

- Check your evacuation route to get to above evacuation sites.