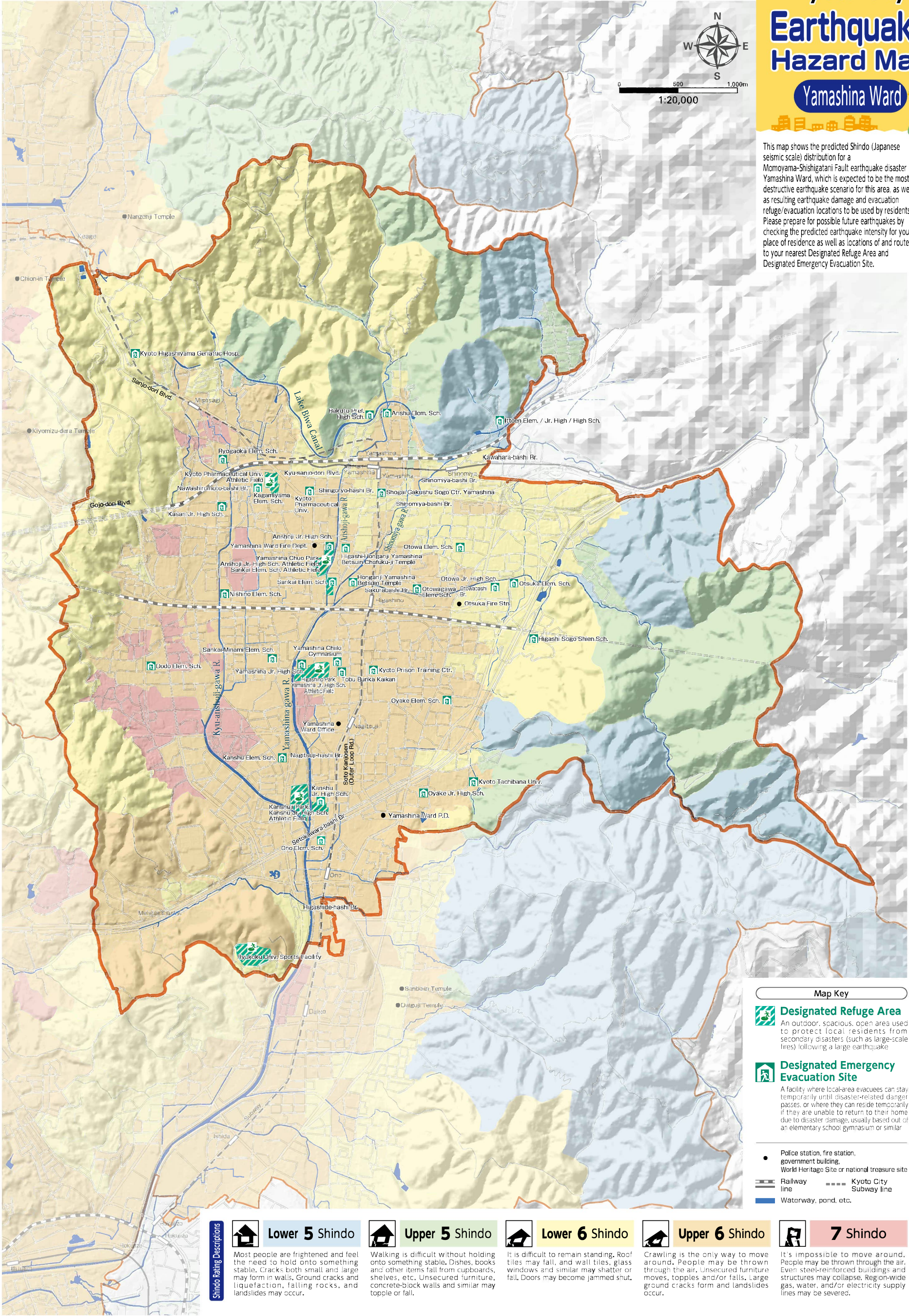


This map was created based on Geospatial Information Authority of Japan (GSI) 1:25,000 scale numerical map data (Spatial Data Infrastructure data) with a 50-meter elevation mesh scale, used with authorization from the GSI director (authorization no. F-seis-21-gyoshi #733).

# Kyoto City Earthquake Hazard Map

## Yamashina Ward

This map shows the predicted Shindo (Japanese seismic scale) distribution for a Momoyama-Shishigatani Fault earthquake disaster in Yamashina Ward, which is expected to be the most destructive earthquake scenario for this area, as well as resulting earthquake damage and evacuation refuge/evacuation locations to be used by residents. Please prepare for possible future earthquakes by checking the predicted earthquake intensity for your place of residence as well as locations of and routes to your nearest Designated Refuge Area and Designated Emergency Evacuation Site.



**Map Key**

**Designated Refuge Area**  
An outdoor, spacious, open area used to protect local residents from secondary disasters (such as large-scale fires) following a large earthquake

**Designated Emergency Evacuation Site**  
A facility where local-area evacuees can stay temporarily until disaster-related danger passes, or where they can reside temporarily if they are unable to return to their home due to disaster damage, usually based out of an elementary school gymnasium or similar

- Police station, fire station, government building, World Heritage Site or national treasure site
- Railway line (solid line), Kyoto City Subway line (dashed line)
- Waterway, pond, etc. (blue line)

**Shindo Rating Descriptions**

**Lower 5 Shindo**  
Most people are frightened and feel the need to hold onto something stable. Cracks both small and large may form in walls. Ground cracks and liquefaction, falling rocks, and landslides may occur.

**Upper 5 Shindo**  
Walking is difficult without holding onto something stable. Dishes, books and other items fall from cupboards, shelves, etc. Unsecured furniture, concrete-block walls and similar may topple or fall.

**Lower 6 Shindo**  
It is difficult to remain standing. Roof tiles may fall, and wall tiles, glass windows and similar may shatter or fall. Doors may become jammed shut.

**Upper 6 Shindo**  
Crawling is the only way to move around. People may be thrown through the air. Unsecured furniture moves, topples and/or falls. Large ground cracks form and landslides occur.

**7 Shindo**  
It's impossible to move around. People may be thrown through the air. Even steel-reinforced buildings and structures may collapse. Region-wide gas, water, and/or electricity supply lines may be severed.