

# Flood Preparation



## Kyoto City Disaster Prevention Portal Site

This website offers various information related to disaster preparedness.  
● Information of designated emergency evacuation sites and their operating status.  
● Transportation and other information

Multilingual Support


<https://www.bousai.city.kyoto.lg.jp>

Language Selection

Computer



Smart phone



## Evacuation Procedures

Determine your location on the hazard map on the other side of this sheet.



Is your home in an area with a risk of building collapse?

Yes

No

How high is the predicted flood level?

Over 5 m	3 to under 5 m	0.5 to under 3 m	Under 0.5 m
			4 stories 3 stories 2 stories 1 story

How tall is your house/building?

1 or 2 stories

3 stories or higher

How tall is your house/building?

1 story

2 stories or higher

Evacuate to the 3rd floor or higher.

Evacuate to the 2nd floor or higher.

### Evacuate the Building

Check the evacuation information, and quickly evacuate your home and move to a location outside of the flood-danger area or to a nearby tall building.

! You may not be able to open doors or use stairways if you are in the basement level of a building when flooding happens.



Designated Emergency Evacuation Site

### Be Safe at Home

Move to the highest part of your house/building.



### Confirm the Designated Emergency Evacuation Site Location and Plan a Route from Your Home



Designated Emergency Evacuation Site (For Floods)

A temporary evacuation area or facility designed to keep people safe in the event of a flood disaster



Which evacuation site should I go to?



As a general rule, use the designated evacuation site in the school district of your residence (see the other side of this sheet).

[Inquiries for designated emergency evacuation sites (for floods)]

General Affairs Section, Community Power Promotion Office, Sakyo Ward Office  
075-702-1021

Evacuation Sites in Kyoto City

Check for the evacuation site in your neighborhood.


<https://www.bousai.city.kyoto.lg.jp/0000000311.html>

## When Should I Evacuate?

Check the evacuation information issued by Kyoto City to determine when to evacuate.

Advisory level, alerted regions, available evacuation sites, etc.

Information is sent directly to your mobile phone.



Alert Level 3  
Evacuation of the Aged and People Who Require Assistance

Aged people and people who need extra time to evacuate along with those who assist them should begin evacuation procedures.

Alert Level 4  
Evacuation Directive

Everyone must evacuate immediately.

Check evacuation information at:

- Kyoto City Disaster Preparedness Information Portal Site, TV, radio, and other media.
- You can call and check the information through the Evacuation Information Guidance System.

English 075-702-1021

Japanese 075-241-9901

\*Have your postal code handy to check the information.

Learn other related information, including weather conditions.



Weather advisories and warnings



Visual observation of rainfall and conditions in the area

## Regular Preparation

### Items to Bring in Emergency Situations

- ▶ Prepare the minimum items you will need
- ▶ Store those items in a backpack or similar carrying bag that leaves both hands free



Passport, Residence card



Copies of important documents (driver's license, health insurance card, etc.), cash, bankbook, personal seal (inkan/hanko)



Preserved foods and water



Mobile phones, portable radio, flashlight, chargers and batteries



First aid kit, medications



Clothing, towels, wet wipes



Work gloves, glasses, lighters, etc.



Diapers, feeding bottle (if a baby is involved)



Helmet(s)

### Items to leave at home:

Keep about 3 days of preserved food and water in stock.

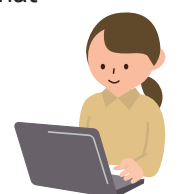
### Creating your Personal Timeline (My Timeline)

Enter all required items to create a personal, written timeline with instructions about what to do in the event of a natural disaster



My Timeline (website)

<https://www.bousai.city.kyoto.lg.jp/mytimeline/>



### Disaster Information App [Safety Tips]

Download and install this app to receive emergency notifications including earthquakes and other natural disasters.

The app is available in 14 languages.

<https://www.rcsc.co.jp/safety>



## Note

Write down the evacuation site you use in case of heavy rain/flooding.

● The school district of my residency

● Designated Emergency Evacuation Site (For Floods)

● My postal code