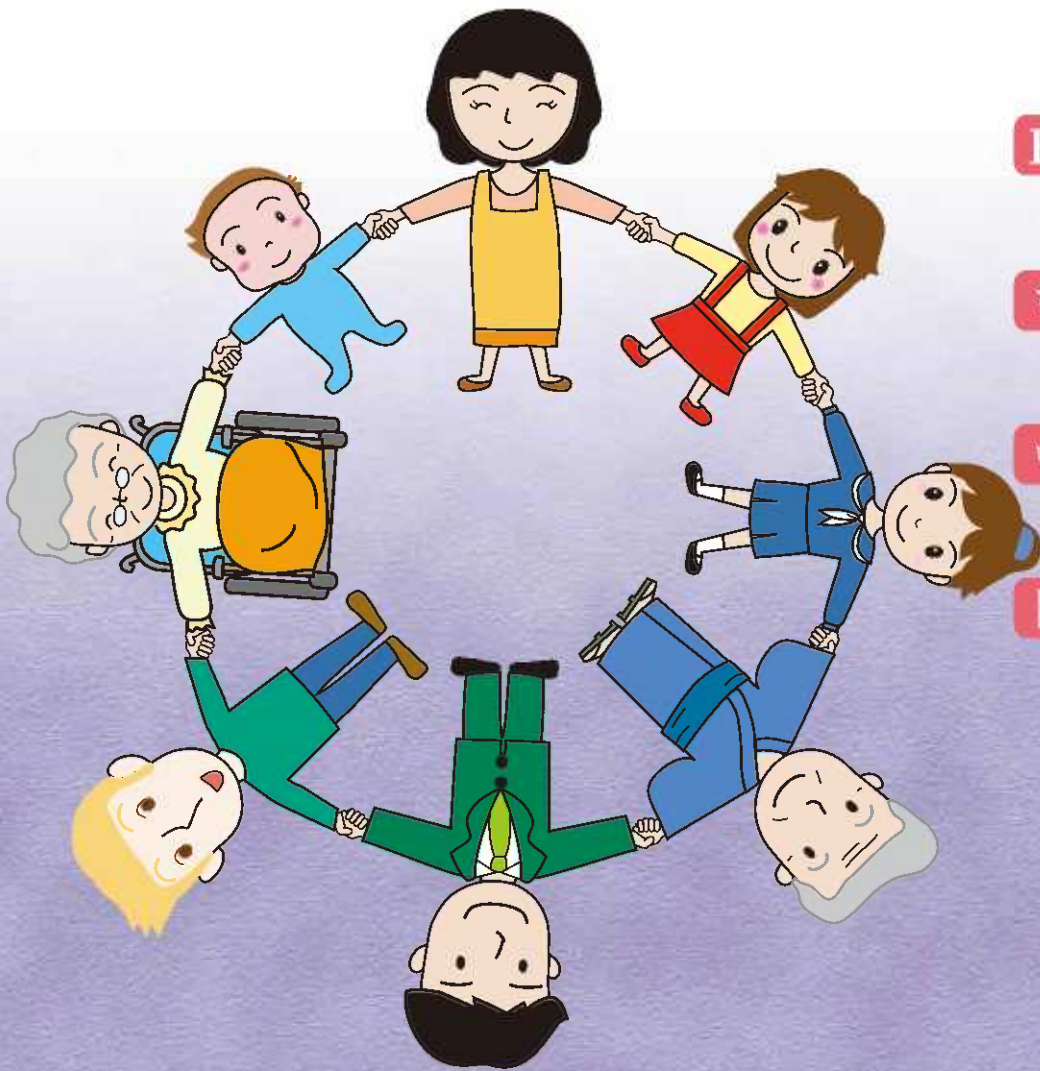


Do you know "Civil protection"?

「국민보호」를 알고 계십니까?

您知道《国民保护》吗?

「国民保護」をご存じですか



ENGLISH

한글

中文

日本語



京都市
CITY OF KYOTO

C o n t e n t s

English

Introduction	1
3 key aspects of Civil Protection	2
What you should do in an emergency	3
Your cooperation is needed	4
Provisions on civil rights and obligations	5
Items to take with you when evacuating	
Items you need to survive for several days	6

한국어

시작하며	7
국민보호의 세가지 포인트	8
유사시 여러분이 해야 할 행동	9
협력을 부탁드립니다	10
국민의 권리 및 의무에 관한 조치	11
피난시의 지참물, 몇일동안 생활하기 위한 비축품	12

中文

前言	13
国民保护的三大要点	14
危急时应如何行动	15
希望大家齐心协力	16
与国民权利及义务有关的措施	17
避难时应携带的必需品, 够生活数日的储备品	18

日本語

はじめに	19
国民保護の3つのポイント	20
万が一のときに、皆さんにとっていただきたい行動	21
ご協力をお願いします	22
国民の権利および義務に関する措置	23
避難するときの持ち出し品・数日間自活するための備蓄品	24



Introduction

In 2004, the "Civil Protection Law" was enacted to ensure that the national government and local governments would coordinate to protect the safety of citizens against armed attacks or large-scale terrorist attacks. In the event that such a situation is encountered, you should stay tuned to television and radio broadcasts for accurate information provided by the administrative bodies for every one of you to do the right things. For this reason, it is important to always be prepared and conscious of what to do correctly in any emergency situation.



What is "Civil Protection"?

Should our county come under or be threatened with an armed attack or large scale terrorist attack, the national and local governments and relevant bodies will cooperate to lead the evacuees to safety or conduct relief operations in order to protect the evacuees' life and properties.

3 key aspects of "Civil Protection":
Evacuation, Relief,
and Damage
minimization



"Civil Protection" protects those who are

Residents in the city area, workers and students commuting to the city area and those evacuated to the city area.

Armed attack

Guerrilla
command
attack

Air-borne
attack

Ballistic
missile
attack

Amphibious
invasion

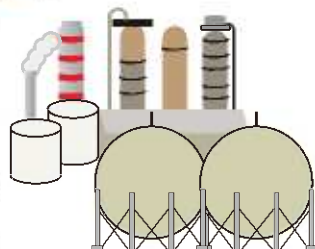
Emergency response situation (Large scale terrorism)

Classification by attacking target

- Bombing of a large public building, large train station or train



- Bombing of a petrochemical industrial complex or inflammable gas storage facility



Classification by weapon

- Explosion of a bomb containing radioactive materials, etc.
- Release of a large quantity of a biological agent such as anthrax bacteria or a chemical agent such as sarin gas



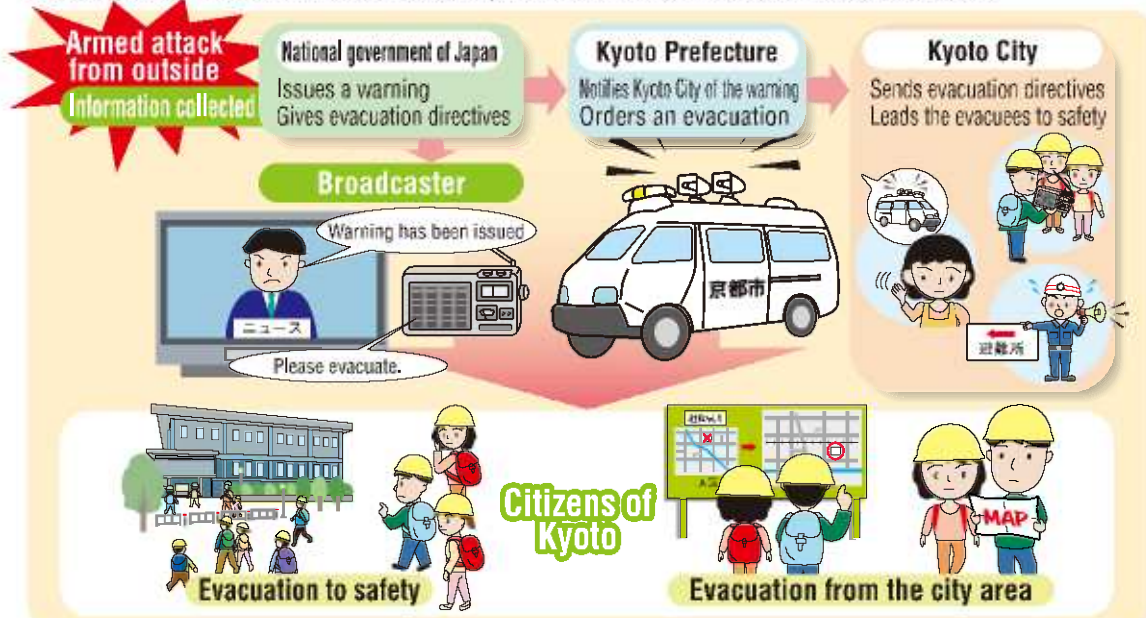
- Terrorism such as an air-borne suicidal bombing



3 key aspects of Civil Protection

1 [Evacuation System]

The national government of Japan will issue warnings or give evacuation instructions to the Kyoto prefectural government if it recognizes the urgent need for protection of the lives, health, and property of its citizens against an armed attack or large scale terrorist attack. The Municipality of Kyoto, will then inform its citizens of these warnings and instructions through every available means of communication such as public information cars or disaster prevention and administration radio broadcasts.



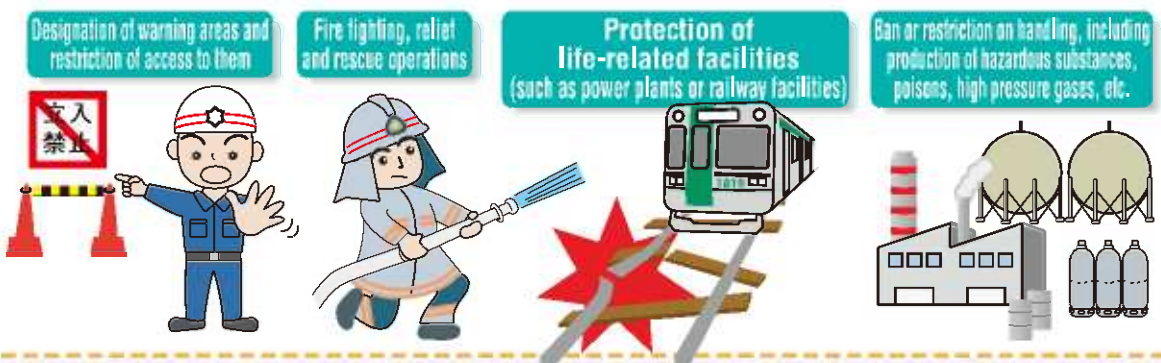
2 [Relief System]

The Municipality of Kyoto will coordinate with Kyoto Prefecture and related agencies and will conduct relief operations by setting up evacuation areas, providing medical care, supplying food and water, etc., for the evacuated residents.



3 [Damage Minimization]

The Municipality of Kyoto will coordinate with the national government, prefectural government and facility managers to try to minimize the damage caused by an armed attack etc...



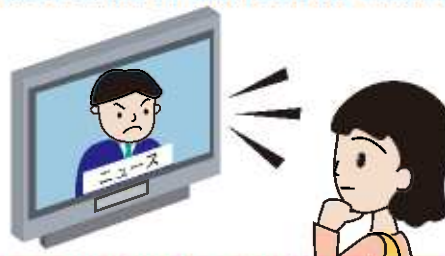
What you should do in an emergency

If a warning is issued

Warnings will be issued to the region that has (or may) come under an armed attack or large scale terrorist attack

TVs and radios, or the city's publicity department, will keep you informed of what has happened and is likely to happen, where it has happened, and what is likely to happen. Also, we will inform you how to cope with the situation.

● Listen to the TV and radio for information.



Stay calm when hearing the information

If you are indoors

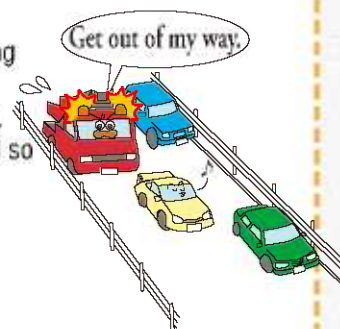
Close doors and windows and turn off gas, faucets, ventilators, and air conditioners. Keep clear of doors, walls and windows.



If you are outdoors

Go inside a robust building nearby.

If you are driving your car, pull to the side of the road so that you are not blocking emergency vehicles.



If an evacuation directive is issued ...

If an evacuation directive is issued, stay calm and follow the directive.

● Make a note of what to wear, what to take with out, and what to lock up



Evacuation process appropriate for the situation

In case of a ballistic missile attack, evacuate into a robust building or underground shopping arcade nearby and wait for a directive from the administrative body.

In case of a guerrilla command attack, first evacuate indoors and follow the directive issued by the administrative body to evacuate to another place.



When a directive is issued from an administrative body, stay calm and do as directed.

<what you should keep in mind about evacuation>

- Wear sturdy shoes, a long-sleeve shirt and long trousers
- Take with you the items you may need (See Page 6.)
- Take with you your personal identification, such as a drivers license.
- Make sure that your house is properly locked up.
- Call to your neighbors.
- Follow the directive to evacuate properly.

Your cooperation is needed

Your cooperation is needed for Civil Protection measures to be implemented.

- If you find a suspicious person or object, please report to the police or fire station immediately.
- Always be prepared by sorting out the items to take with you when evacuating.

Our requests to you

When evacuating, please offer to help the aged or handicapped as long as it is safe for you.

And please help the administrative body with the distribution of relief goods to evacuees.



① Help with leading the evacuating residents to safety.

- Such as leading the evacuees to evacuation buses



② Help with victim relief efforts

- Distribution of relief goods and organization of soup runs at evacuation sites



③ Help to fight fire, transport the injured, and rescue the victims

- Transportation of the injured, goods and relief items, etc.



④ Offer assistance in health and hygiene maintenance.

- Help to set up health consultation centers
- Distribution of brochures prepared by healthcare centers to inform the public about hygiene, etc.,



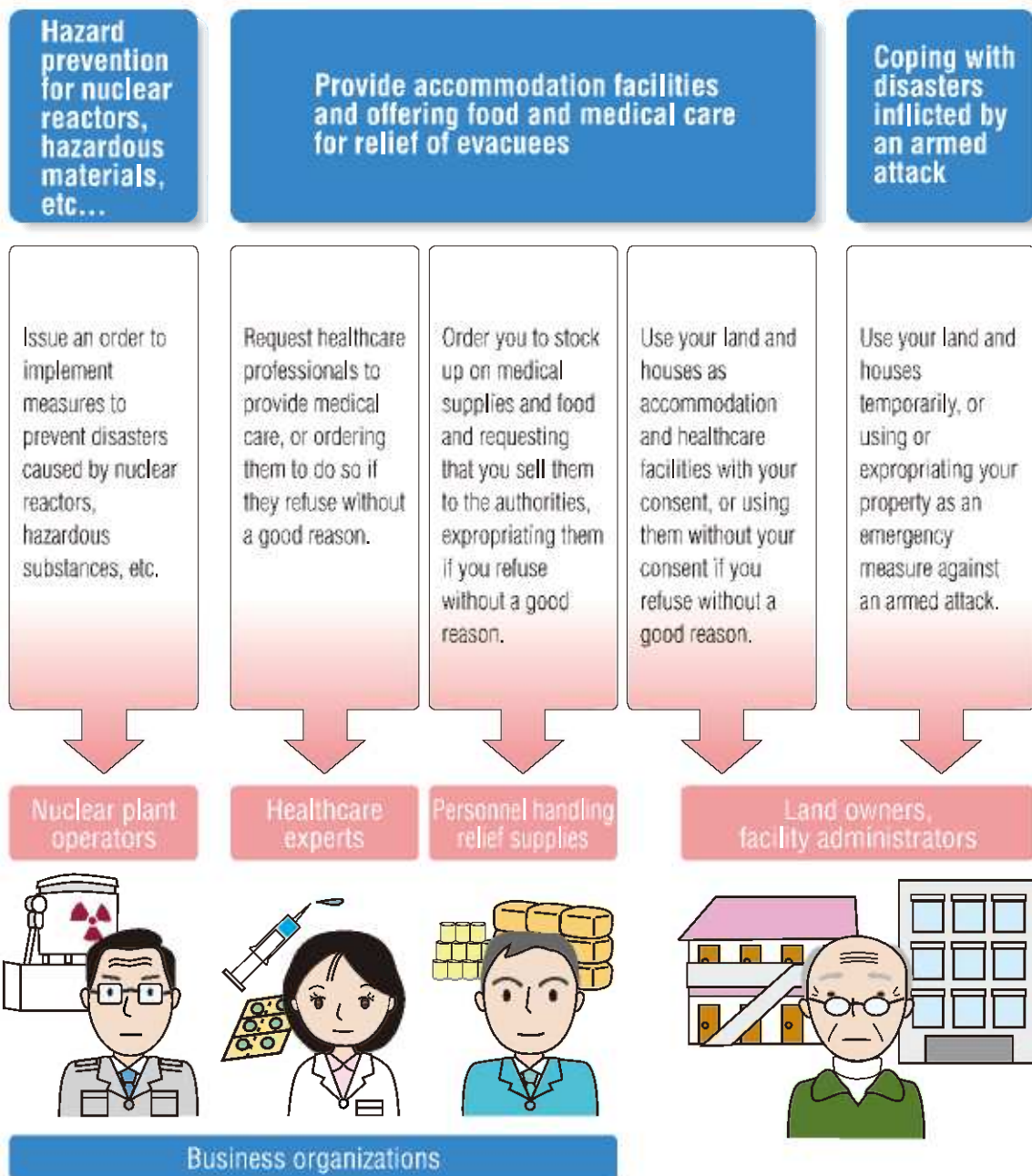
⑤ Participate in evacuation drills

! Your cooperation is voluntary, not mandatory.

- We will take sufficient care of your safety when requesting for your cooperation
- We may ask you to allow us to use your land and houses in order to secure accommodation facilities and medical facilities, or ask your food or medicines to be stored or sold as required for relief operations.
- Any damage caused as a result of your cooperation as requested by an administrative body will be compensated for.

Provisions on civil rights and obligations

Your freedom and rights guaranteed by the Constitution of Japan will be respected as much as possible when evacuee relief efforts are to be made in response to an armed attack or large scale terrorist attack. Should your freedom or rights be restricted in the worst possible unavoidable situation, a proper and fair procedure will be taken to keep the restriction on your freedom and rights to a minimum as follows: You are entitled to submit your request for compensation or your objection in connection with the loss suffered as a result of having your land used, to ensure that your freedom and rights are restored.



Do you know this mark?

This mark is known as the "Special Emblem" and is recognized by the Geneva Convention, etc., as a mark to identify the personnel and locations committed to civil protection operations.



Items to take with you when evacuating

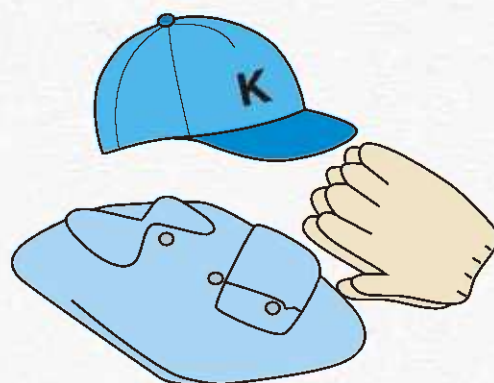
- ☐ **Drinking water**
 - ☐ **Food**
(canned food, biscuits, chocolate)
 - ☐ **Valuables**
(Bank passbook, personal seal, cash, passport, certificate of alien registration, etc.)
 - ☐ **First-aid kit**
(non-prescription drugs, sling, bandages, gauze, band aid, thermometer, antiseptic solution, scissors, tweezers, safety pin, etc.)
 - ☐ **Thick cotton gloves**
 - ☐ **Flashlight**
 - ☐ **Clothes, underwear**
 - ☐ **Portable radio, batteries**
 - ☐ **Matches, candles**
(to be wrapped in a plastic sheet to keep dry)
 - ☐ **Disposable body warmer**
 - ☐ **Wet tissues**
 - ☐ **Pens and pencils**
 - ☐ **Milk, milk bottle, diapers, toys, maternity passbook if you have an infant.**
- 
- A cartoon illustration of a man with dark hair, wearing a blue long-sleeved shirt, pointing his right index finger upwards. He is standing behind a collection of various emergency supplies and personal items. The items include a grey backpack, a white first aid kit, a yellow hard hat, a pink bag, a blue bag, a red flashlight, a portable radio, a calculator, two blue water bottles, several cans of food, a blue container with a fish logo, a pair of white gloves, and a small box of pills. The background is a solid light yellow color.



- ☐ **Drinking water**
(about 3 liters a day per adult)
- ☐ **Food**
- ☐ **Clothes** 2-3 pairs of underwear



- Have newspaper or large bags at hand as they will keep you warm and dry.
- Have gloves, a hat, goggles and a raincoat on hand, too. They may be needed if chemical agents, biological agents or radioactive materials are used as weapons.



Efforts toward civil protection in Kyoto City

Sep. 2004 Civil Protection Act enacted
Jan. 2006 Settling on the Kyoto Prefecture Civil Protection Plan
Jan. 2007 Settling on the Kyoto City Civil Protection Plan
Aug. 2007 Holding of the Crisis Management and Civil Protection Lecture
Oct. 2010 Implementation of Kyoto Prefecture and Kyoto City Civil Protection Joint Working Training

교토 시 국민 보호에 관한 대응

2004년 9월 국민보호법 시행
2006년 1월 교토 부 국민보호 계획 책정
2007년 1월 교토 시 국민보호 계획 책정
2007년 8월 위기 관리·국민보호 강연회 개최
2010년 10월 교토 부·교토 시 국민보호 공동 기동훈련 실시

京都市有关国民保护的举措

2004年 9月 国民保护法施行
2006年 1月 京都府国民保护计划策定
2007年 1月 京都市国民保护计划策定
2007年 8月 危机管理·国民保护讲演会召开
2010年 10月 京都府·京都市国民保护联合实操演练实施

京都市の国民保護に関する取組

平成16年 9月 国民保護法施行
平成18年 1月 京都府国民保護計画策定
平成19年 1月 京都市国民保護計画策定
平成19年 8月 危機管理・国民保護講演会開催
平成22年 10月 京都府・京都市国民保護共同実動訓練実施



Terrorist incidents, etc. which have occurred in the past

- Tokyo subway sarin gas attack (Mar. 20, 1995)
- Ballistic missile launch incidents (Aug. 31, 1998, July 5, 2006, etc.)
- Synchronized terrorists attacks on the US (Sep. 11, 2001)
- Synchronized train bombing attacks in Spain (Mar. 11, 2004)
- Synchronized bombing attacks in London (July 7, 2005)
- Synchronized terrorist attacks on Paris (Nov. 13, 2015)

지금까지 발생한 테러 사건 등

- 도쿄 지하철 사린 사건 ('95.3.20)
- 북한 탄도미사일 발사 사건 ('98.8.31·'06.7.5이외)
- 미국 911 테러 사건 ('01.9.11)
- 스페인 마드리드 열차 연쇄 폭탄 테러 사건 ('04.3.11)
- 런던 연쇄 폭탄 테러 ('05.7.7)
- 프랑스 파리 연쇄 테러 사건 ('15.11.13)

至今发生的恐怖活动事件

- 地铁沙林事件('95.3.20)
- 弹道导弹发射事件('98.8.31·'06.7.5等)
- 美国同时多发恐怖事件('01.9.11)
- 西班牙同时多发列车爆炸事件('04.3.11)
- 伦敦同时爆炸事件('05.7.7)
- 巴黎同时多发恐怖事件('15.11.13)

これまでに発生したテロ事案など

- 地下鉄サリン事件('95.3.20)
- 弾道ミサイル発射事件('98.8.31·'06.7.5ほか)
- 米国同時多发テロ事件('01.9.11)
- スペイン同時多发列車爆破事件('04.3.11)
- ロンドン同時爆破事件('05.7.7)
- パリ同時多发テロ事件('15.11.13)

*Detailed information on the system
of Civil Protection*

국민보호의 구조에 관한 상세한 정보

有关国民保护规定的详细情报

国民保護の仕組みに関する詳しい情報

○ *Civil Protection portal site (Cabinet Secretariat)*

○ 국민보호 포털사이트(내각 관방)

○ 国民保护的网页介绍(内閣官房)

○ 国民保護ポータルサイト(内閣官房)

<http://www.kokuminhogo.go.jp/>

○ *Fire and Disaster Management Agency*

○ 총무성 소방청

○ 总务省消防厅

○ 総務省消防庁

<http://www.fdma.go.jp/>

Kyoto City Civil Protection Plan

You can view it in the Kyoto City public information corner.
You can also see the contents on the website of
the Kyoto City Information Center.

교토 시 국민보호계획

교토 시 정보공개 코너에서 보실 수 있습니다.

또한, 내용은 교토 시 정보관의 홈페이지에서도 보실 수 있습니다.

京都市国民保护计划

请参阅京都市情报公开角。

或参阅京都市情报馆的网页介绍。

京都市国民保護計画

京都市情報公開コーナーで閲覧できます。

また、内容は京都市情報館のホームページでもご覧になれます。

<http://www.city.kyoto.lg.jp/>

京都市行財政局防災危機管理室

T604-0931

京都市中京区押小路通河原町西入榎木町450番地の2

TEL:075-212-6792 FAX:075-212-6790

平成28年2月発行

京都市印刷物第273155号